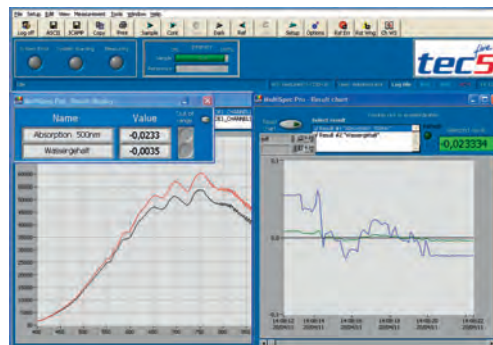


MultiSpec® Pro: Process Software for UV-VIS-NIR Spectroscopy

MultiSpecPro offers various data acquisition modes, data display/processing and output options, optimized for process applications. All tec5 operating electronics and spectrometer systems are supported. MultiSpecPro comes as a base version with various additional modules to add, e.g. chemometric prediction, color measurement and process communication.



MultiSpec Pro Basic

The base package offers the complete functionality for data acquisition, graphical display and data storage/output. This version can be extended by additional modules.

MultiSpec Pro Lite

For applications with requirements for data acquisition, display and export of spectra only, we offer the version MultiSpecPro Lite with limited functionality and expandability.

Features

- Complete support of tec5 hardware for data acquisition
- Continuous measurements with automatic storage of spectral data and results
- Graphical display of absorption, transmission and intensity data
- Various display modes, e.g. real-time charts
- Predictions based on linear regression
- Direct export of spectral data in ASCII or JCAMP format
- Status messages
- Support of Digital I/O for e.g. triggering, remote control and output of status messages.
- System diagnostic tools and protocols

Additional Modules

System Control Moduls

- User management with user-configurable access control
- Log File for documentation of
 - Log-In/Log-Out, System errors and warnings
- Lamp intensity monitor

Chemometric Modules

Quantitative predictions based on

- Unscrambler™ On-line Predictor (OLUP) from CAMO
- SensoLogic Predictor
- GRAMS™ PLSPlus/IQ Predictor from Thermo Galactic

Note: To create the model the respective chemometrical software package is needed!

Multi Channel Module

- Operation of multiple measurement channels

Color Module

- Color determination according CIELAB, CIE94, CMC

Peak Finder Module

- Determination of peaks and valleys
- Output of the according wavelengths and the minimum/maximum values

Data Preprocessing Module

- Baseline correction and bubble/particle detection algorithm for stable process measurements

Process Interfaces

- Details see on next page

Software

Product Information MultiSpec® Pro

Functional Overview

	MultiSpec® Pro Basic	MultiSpec® Pro Lite
Workspace Management		
Administration of displays and measurement parameters in specific workspace files	•	
Data Acquisition		
Supports tec5 electronics and spectrometer systems based on PCI, USB and Ethernet interfaces; manual and continuous measurements; simultaneous referencing with 2 channel operation; automatic dark current correction external shutter control external triggering of the scan cycle	•	•
Joining of UV-VIS-NIR spectra of multiple detectors	•	
Data Evaluation		
Flexible definition of result values	•	
Linear regression	•	
Graphical Display		
Display of intensity, absorption, transmission and dark current spectra	•	•
Extended graphical display for multiple spectra	•	•
Numerical result and chart display for user selectable result values	•	
Data Export and Storage		
Manual and automatic export of spectral data to JCAMP and ASCII format (EXCEL-compatible)	•	•
Manual and automatic export of result data to ASCII format	•	
System Diagnostics		
Online system control and visualization of multiple system parameters	•	
Automatic system diagnostics and report generation	•	
Automatic calculation of standard deviation	•	
Extensions with Additional Modules	•	

For software evaluation fully functional 30 day trial versions are available

Process Interfaces

Standard Interfaces	Digital In	Digital Out	Analog In	Analog Out
MultiSpec System	2	2	-	-
Optionale Interfaces	Digital In	Digital Out	Analog In	Analog Out
OPC/DA Client	8	8	32 (Integer, real)	32 (Integer, real)
I/O PCI-6308	4	4	-	8
Profibus	8	8	16 (Word)	16 (Word)

Only one optional process interface can be selected

Hardware Requirements

Operating System	Windows XP (SP2 or more higher), Windows Vista (32 bits), Windows 7 and 64 bit versions starting from MultiSpec Pro V3.6
Processor/RAM	According to requirements of the operating system, min. 1GHz, 1GB RAM
HDD	At least 100 MB of free disk space.
Graphics	XVGA, high color

tec5USA_PL_Software_MultiSpecPro_06/2011



Headquarters
 tec5 AG | In der Au 27
 61440 Oberursel, Germany
 Tel: +49 6171 9758-0
 info@tec5.com | www.tec5.com
 www.tec5uk.com

80 Skyline Dr
 Plainview, NY 11803
 Phone: 516-653-2000
 www.tec5usa.com