

Optimized for process applications, the MultiSpec^{Pro} software offers great variety of measurement and analysis capabilities. All tec5 electronics and spectrometer systems are supported. Even the base version offers the complete functionality of spectral data recording, graphic display, data saving and data output. The required drivers and LabVIEW Run-Time Engine are included in the delivery. In addition to the basic version, various extension modules for process control and data processing e.g. chemometrics and color measurements, are available.

MultiSpec^{Pro} System Control Module

For total control of the system:

- w User management with configurable access authorization
- w Log file for documentation of
 - ü Log-In / Log-Out
 - ü System errors
 - ü System warnings
- w Intensity control of the light source
- w Workspace to save various workspaces

MultiSpec^{Pro} MultiChannel Module

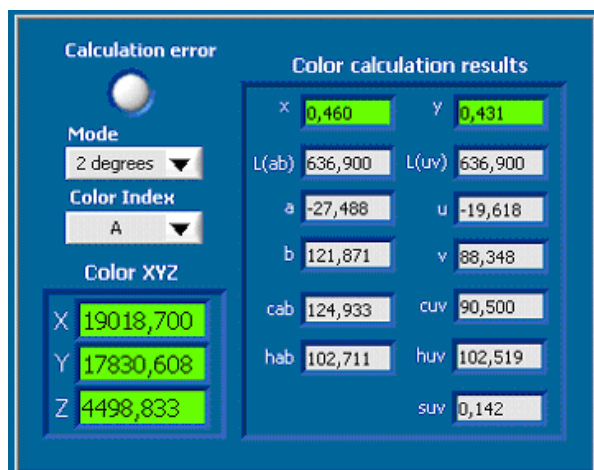
Monitoring and analysing of multiple measurement channels:

- w Incl. graphical display of all channels

MultiSpec^{Pro} Color Module

Color calculation: CIELAB, CIE94 and CMC:

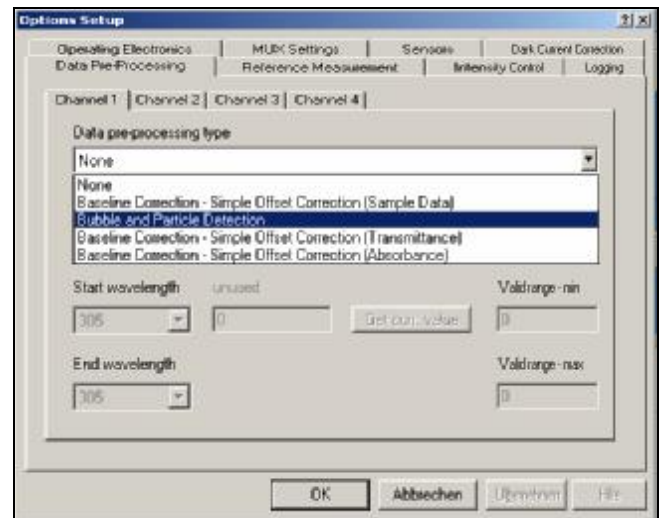
- w Ten predefined light sources
- w 2°- and 10° viewing angle



MultiSpec^{Pro} Data-Preprocessing Module

Processing of spectral data before saving:

- w Baseline correction
- w Bubble detection



MultiSpec^{Pro} Olup Module

Interpretation of chemometric models from UnscramblerTM:

- w Quantitative calculations based on MLR, PLS1, PLS2
- w Outlier tests (residual and leverage)
- w Up to 10 models coevally utilizable
- w No limitation of parameters
- w UnscramblerTM is required to create models!

MultiSpec^{Pro} PLSplus / IQ Module

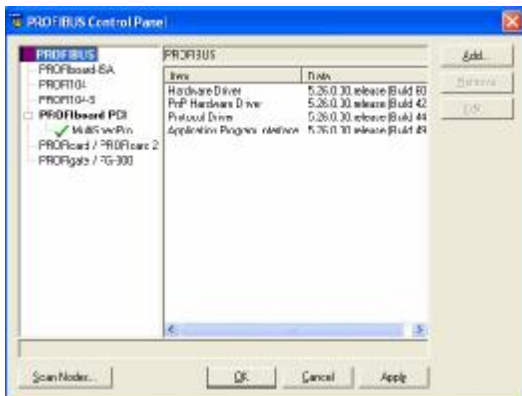
Interpretation of chemometric models from GRAMS, requires GRAMS to create models!



MultiSpec^{Pro} Profibus Module

For the professional interfacing to a process control system via Profibus:

- w Incl. PROFboard PCI
- w Incl. Remote Control Module for initiating measurements / calibrations



MultiSpec^{Pro} I/O PCI-6308A Module

For the use of digital and analog inputs and outputs:

- w Incl. opto-isolated I/O card PCI-6308A
 - with 8 opto-isolated 4-20mA analog outputs
 - incl. 4 digital outputs
 - incl. 4 digital inputs
- w Incl. Remote Control Module for initiating measurements / calibrations

MultiSpec^{Pro} Peak Finder Module

For peak and minimum detection:

- w Definable wavelength area for detection
- w Adjustable limits to suppress noise
- w Applicable for result definition



tec5^{five}AG
Technology for Spectroscopy

tec5 AG
In der Au 27
D-61440 Oberursel
Tel: ++49-6171-9758-0
Fax: ++49-6171-9758-50
e-mail: info@tec5.com
Internet: www.tec5.com

tec5^{USA}
Technology for Spectroscopy

80 Skyline Drive
Plainview, NY 11803
www.tec5USA.com

Tel.: 516-653-2000
Fax: 516-939-0555
info@tec5USA.com